

**Updating the Cetacean Species List of Raja Ampat, Indonesia,
with Additional Sightings of the Rarely Documented
Omura's Whale (*Balaenoptera omurai*) and a New Record
of Melon-Headed Whales (*Peponocephala electra*)**

Supplemental Figures

Achmad Sahri,¹ Régis Hocdé,² Muhammad R. Nandika,¹ Fahmi,¹ Lay Tjarles,³
La O. Alifatri,¹ Jafry F. Manuhutu,⁴ Mathias Taborat,⁵ Ferdinand I. P. Bata,⁶
Danielle Krebs,⁷ Putu L. K. Mustika,^{8,9} and Laura Mannocci²

¹Research Center for Oceanography, National Research and Innovation Agency, Jakarta, Indonesia
E-mail: achmad.sahri@brin.go.id

²MARBEC, Université de Montpellier, CNRS, Ifremer, IRD, Montpellier, France

³Politeknik Kelautan dan Perikanan Sorong, Papua Barat Daya, Indonesia

⁴Faculty of Fisheries and Marine Science, Universitas Papua, Manokwari, Papua Barat, Indonesia

⁵Dinas Perikanan Kabupaten Raja Ampat, Papua Barat Daya, Indonesia

⁶National Marine Protected Area Authority (BKKPN) Kupang, Sater Raja Ampat, Papua Barat Daya, Indonesia

⁷Yayasan Konservasi RASI (Rare Aquatic Species of Indonesia), Samarinda, Kalimantan Timur, Indonesia

⁸College of Science and Engineering, James Cook University, Queensland, Australia

⁹Cetacean Sirenian Indonesia, Jakarta, Indonesia



Figure S1. Three other small delphinid species recorded from our observations in Raja Ampat: (a) presumed spinner dolphin (*Stenella longirostris*), (b) presumed common bottlenose dolphin (*Tursiops truncatus*), and (c) Indo-Pacific bottlenose dolphin (*Tursiops aduncus*). (Photos provided by Achmad Sahri and Munhammad R. Nandika, 2023)

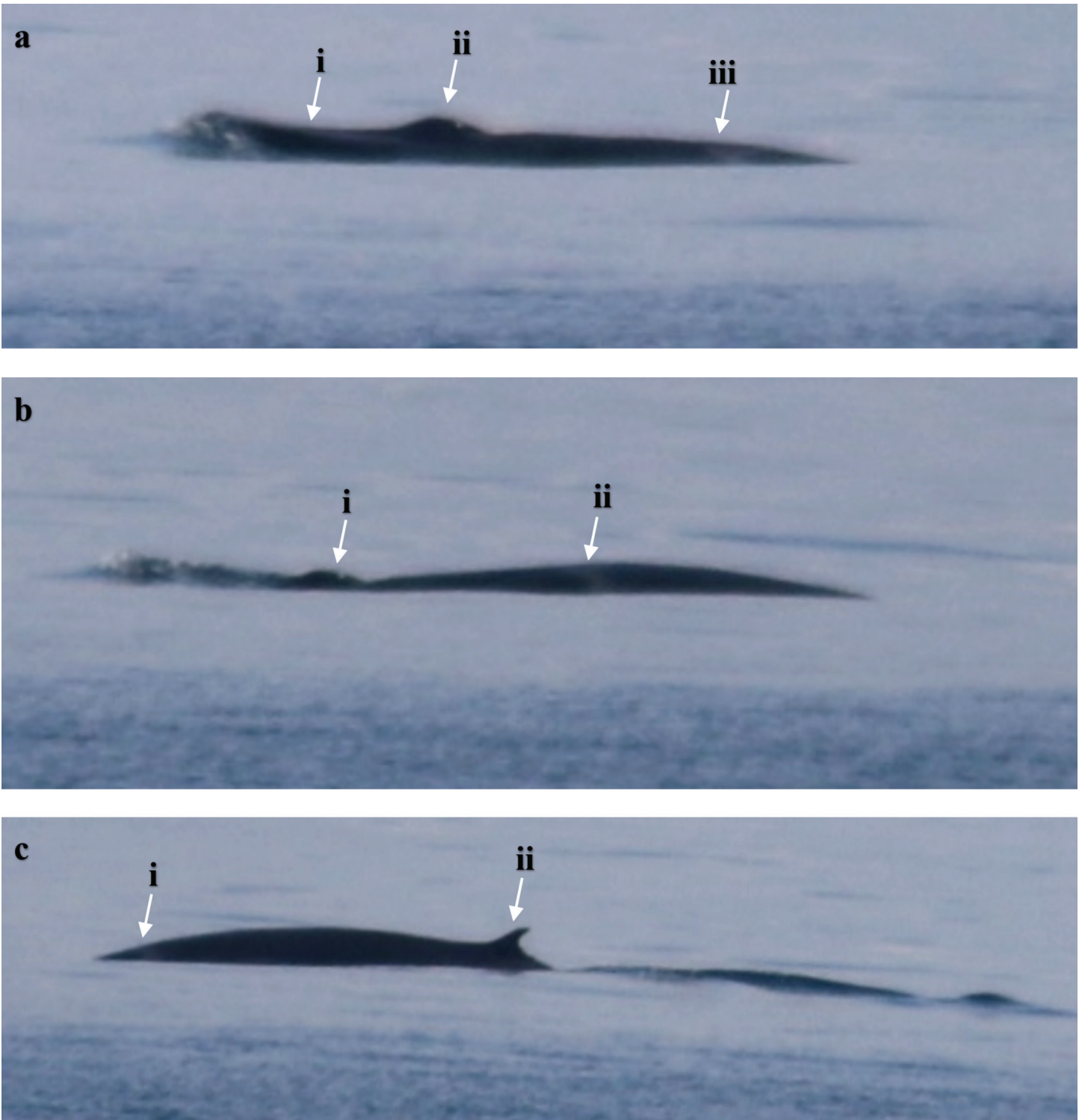


Figure S2. Omura's whale (*Balaenoptera omurai*) sighted in Dampier Straits on 14 April 2023. Rough water condition with cloudy sky after rain caused low-quality photographs. Letters and arrows indicate the distinctive features observed: (a) feature i = flat head, feature ii = prominent blowhole, and feature iii = white/gray chevron coloration pattern; (b) feature i = prominent blowhole and feature ii = white/gray chevron coloration pattern; and (c) feature i = white/gray chevron coloration pattern and feature ii = variation in Omura's whale dorsal fin with hooked and more pointed dorsal fin. (Photos provided by Achmad Sahri, 2023)