

Dyadic Interspecific Interaction Between a Harbour Seal (*Phoca vitulina*) and a Eurasian Otter (*Lutra lutra*)

Emily L. Hague¹ and Nick McCaffrey²

¹Centre for Marine Biodiversity & Biotechnology, Institute of Life and Earth Sciences,
Heriot-Watt University, Edinburgh EH14 4AS, UK
E-mail: elh2001@hw.ac.uk

²Southspear Media and Surveys Ltd, Aith, Shetland, UK

This paper documents an opportunistic observation of a dyadic interaction between a harbour seal (*Phoca vitulina*) and a Eurasian otter (*Lutra lutra*) within the southern remit of Aith Voe, Shetland, Scotland, United Kingdom, on 2 April 2022. The interaction occurred both on and within ~10 m of Aith Pier, a man-made public pier consisting mainly of rock armour (i.e., human-placed rock to protect shoreline structures), which juts northeast into the sheltered waters of Aith Voe (Figure 1). During the described encounter, the tide was rising (Low: 0615 h, 0.38 m; High: 1234 h, 2.18 m), and there was light southwesterly wind (4.5 km/h; Beaufort State 1). The interaction was recorded by an unmanned aerial system (UAS) (Mavic3,

DJI Fly, Firmware, Version 1.5.10), which was launched at 0746 h from Aith Pier (60.286496, -1.3751324). The UAS collected 3 min 18 s of aerial video footage (the Supplementary Video for this paper is available in the “Supplemental Material” section of the *Aquatic Mammals* website: https://www.aquaticmammalsjournal.org/index.php?option=com_content&view=article&id=10&Itemid=147).

The harbour seal is first visible in the UAS video footage swimming ~1 m from the most northeasterly perimeter of the pier (60.287061, -1.3738901; Figure 1). The seal momentarily stopped and adopted a bottling position, with head up and out of the water, looking in the direction

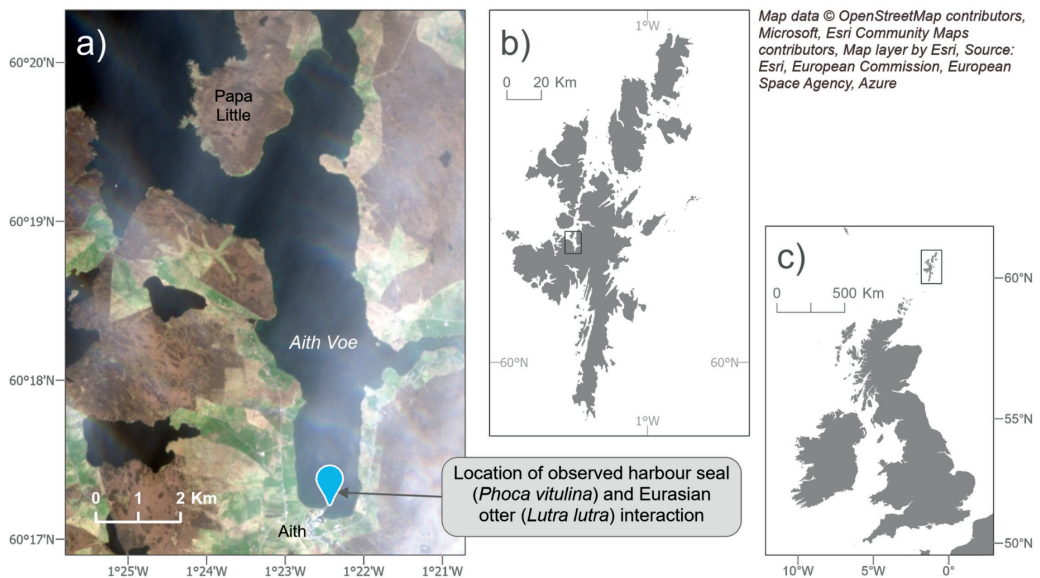


Figure 1. (a) Location of the observed harbour seal (*Phoca vitulina*) and Eurasian otter (*Lutra lutra*) interaction off Aith Pier, Shetland; (b) location of Aith Voe in relation to Shetland; dark box indicates observation location; and (c) location of Shetland Isles in the United Kingdom.

