

Short Note

Can the Camera Lie? A Nonpermanent Nick in a Bottlenose Dolphin (*Tursiops truncatus*)

Nicola J. Quick,¹ Barbara Cheney,² Paul M. Thompson,² and Philip S. Hammond¹

¹Sea Mammal Research Unit, Scottish Oceans Institute, University of St Andrews, Fife KY16 8LB, UK
E-mail: njq@duke.edu

²University of Aberdeen, Institute of Biological and Environmental Science,
Lighthouse Field Station, Cromarty IV11 8YL, UK

Current address for Nicola J. Quick: Nicholas School of the Environment, Duke Marine Lab,
135 Duke Marine Lab Road, Beaufort, NC 28516, USA

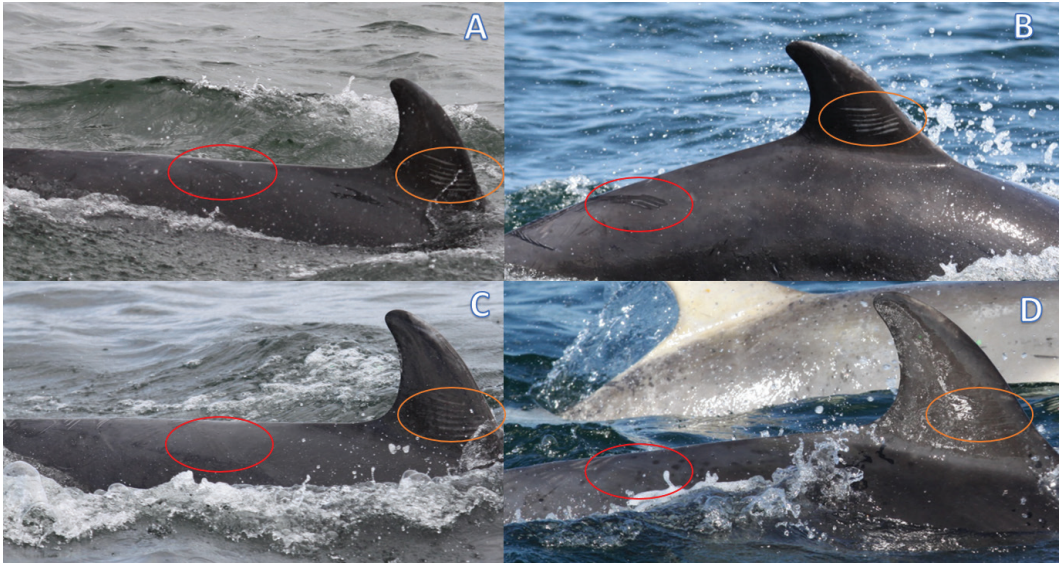


Figure S1. Photographs of individual 1121 showing matches between years. Fin shape and large white horizontal scratches on side of dorsal fin (orange ellipse) fade but remain constant. Scratches on body (red ellipse) fade with progression through time but are still evident in each photograph. Panels A and B are from June 2011, Panel C is from July 2012, and Panel D is from June 2013. In 2012, the individual picked up a nick in the trailing edge of its fin (Panel C). This nick was different to that seen in the anomalous photograph (Panel A, Figure 1 in text) from 2011, but it remained consistent when this animal was resighted again in 2013 (Panel D). All images are JPEG file formats shown at 100% size with no enhancements.

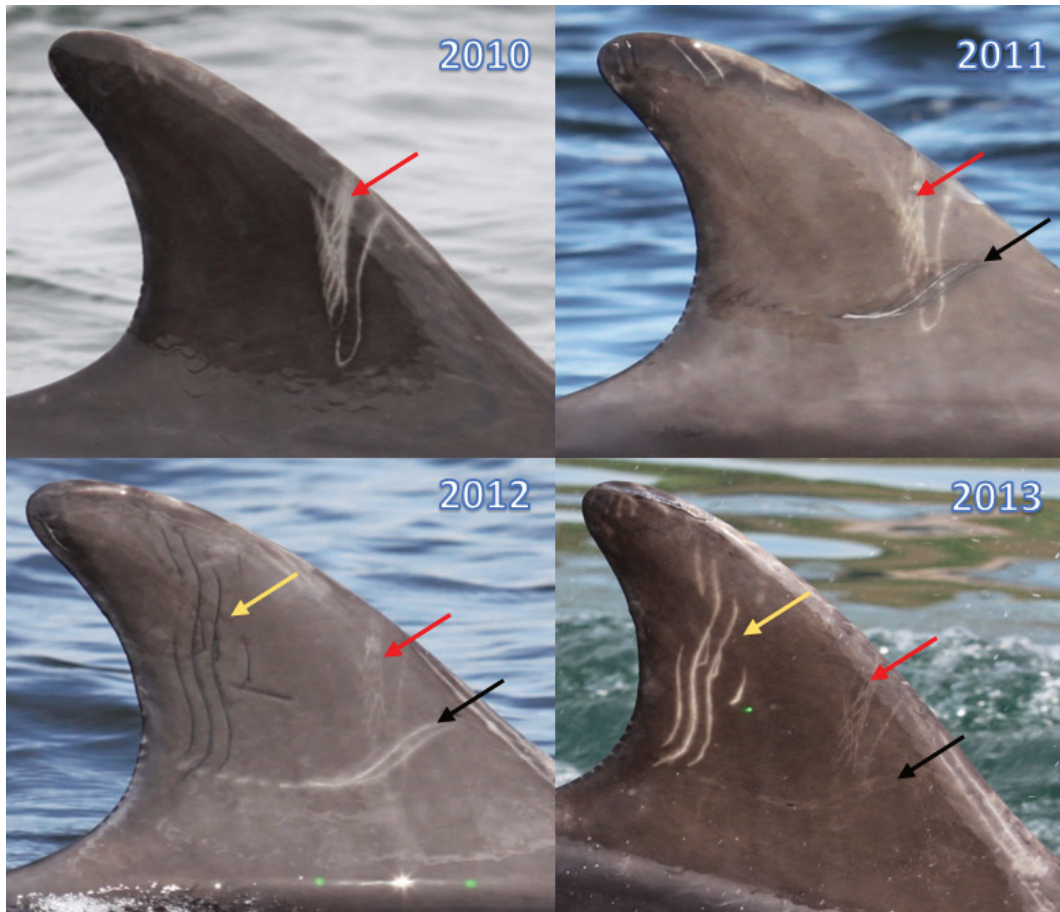


Figure S2. Persistence of nonpermanent scratches over a 4-y period in dolphin number 1059. Coloured arrows point to the same marks over time. Top left image is from 2010, top right image is from 2011, the bottom left image is from 2012, and the bottom right image is from 2013.



Figure S3. Photographs of individual 1121 showing the right hand and left hand sides of fin. Top row shows images at 100% size with no enhancements. Bottom row shows the same images with gamma adjustment (Mizroch, 2007).

All images relating to this publication are available from the Dryad Digital Repository: https://urldefense.proofpoint.com/v2/url?u=http-3A__dx.doi.org_10.5061_dryad.t2462&d=CwIGaQ&c=imBPVzF25OnBgGmVOlcsiEgHoG1i6YHLR0Sj_gZ4adc&r=e4rnq0iJeFIrKZSJ3sFuRq7G_X3coWd8Dy2p0mvGnUU&m=Qv3z5bTIPh1KwgxmT0ie2qoua0IqBnItpHeevwyRazQ&s=BUyuoJ0sWMS9itkqeSn-dXgmlZYpzimxICSLwOZqaMs&e=.